

BRAUN L810



Muted, suave, relaxing



The exterior appearance is not pretty: twisted grilles, cases with numerous scratches accompanied by traces of stickers, dust galore.

At the HP level it's not Broadway either since one of the tweeters is HS.



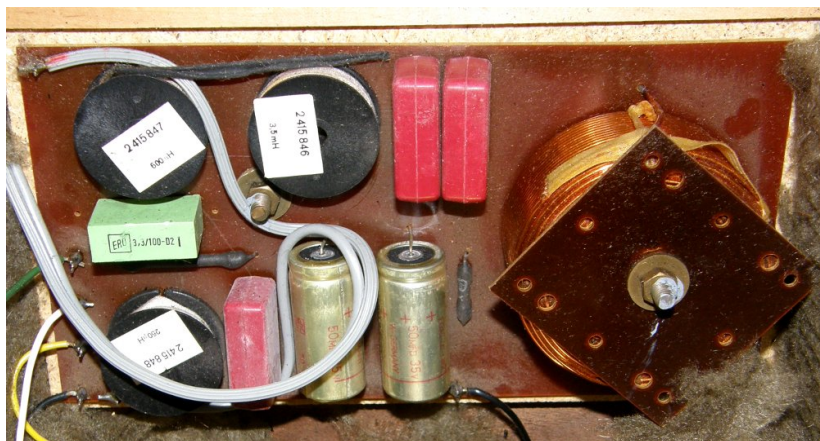
It was minus one to determine the model!
These are L810s with an impedance of 4 ohms
and a maximum power of 50W.



The interior is full as an egg, all the
usually empty volume being made of glass
wool.



Medium and dome tweeter are heavy and bulky,
German quality requires ;-)



The filter whose components are not gnogotte
such as the impressive choke on the right.



And it was after 35 years of good and loyal service that he decided to quit...



Extraction of the HS tweeter.

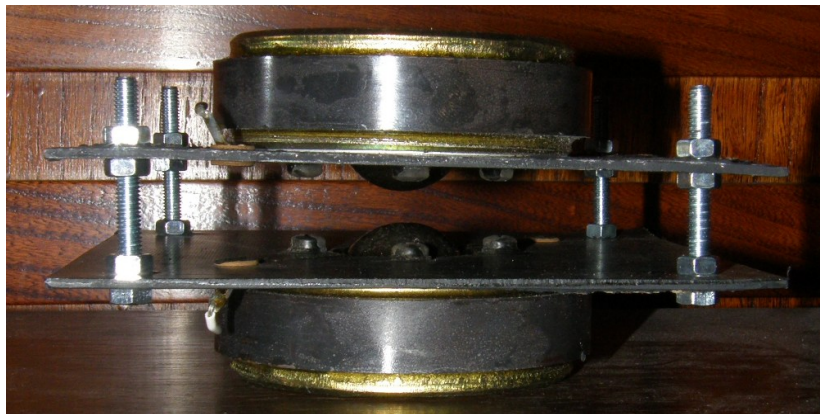
Be careful not to do the manipulation opposite!!! you only need to unscrew the 4 corner screws, those close to the dome only serving to hold the magnet in place.

To release the element from the black "glue-joint", you have to go there by tapping carefully with a rubber mallet.

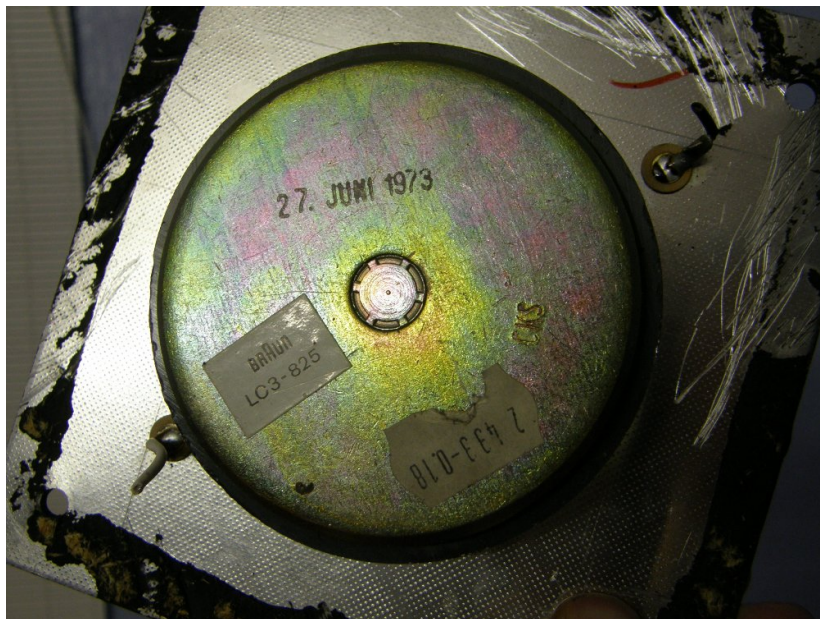


The explanation of the malfunction in image...

It is irreparable unless you find wire of the same diameter, varnish, a pinch of luck and a ton of patience.



Receipt of the two tweeters ordered in Germany.



1973, these tweeters are even older than the previous ones; I will start by changing only one, then if listening to the characteristics between left and right are different, I will have to replace them on both speakers.



The grids having never been removed, the strata of dust have been deposited there for so long that a paleontologist would find there something to understand the disappearance of the dinosaurs.

--> A quick wipe with a wet sponge and we talk about it more. I emphasize the word fast, a slow or prolonged action that can tear small particles of cardboard from the membranes.

On the suspension side, the rubber remained nickel, no wear, cracks or cracks :-)



Drying.



Well massacred, all they lack is the trace of the flowerpot...



The necessary gear, to which we will add a can of elbow grease.



Before/after going to the neckline.

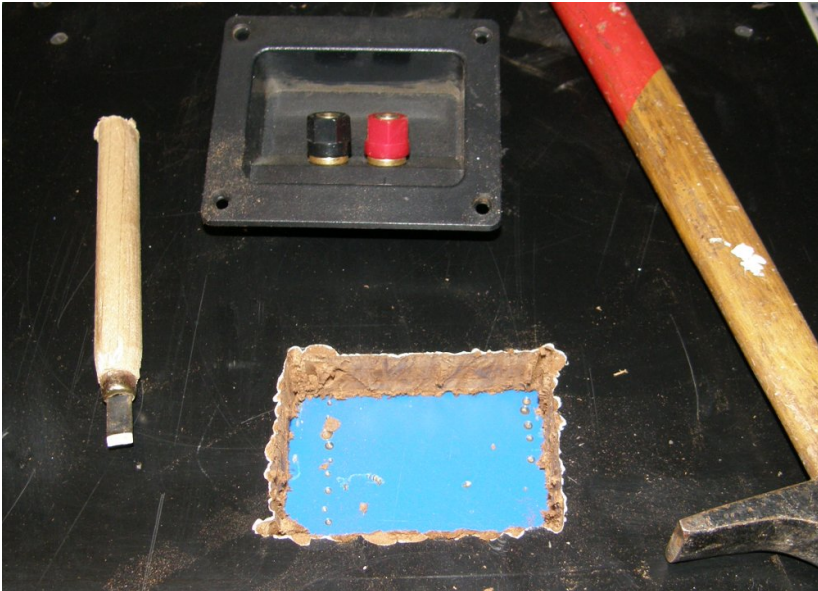


Removal of Decapex varnishes and glues.



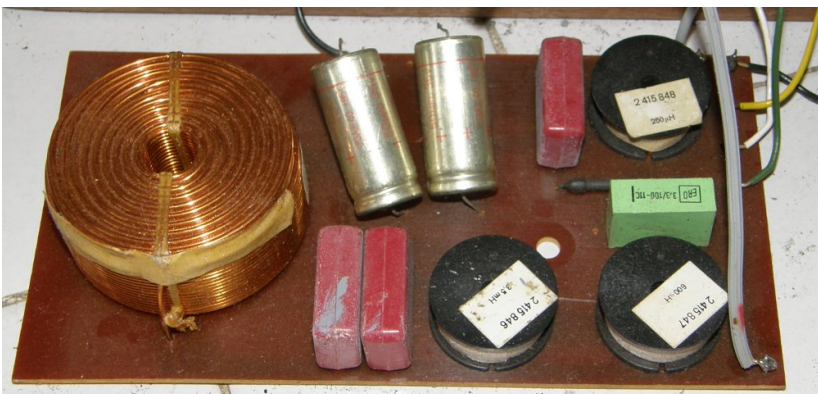
After rinsing and drying.

The sequence of operations?
Sanding to remove residue and deep scratches
followed by several coats of varnish.



Addition of Jmlab terminal blocks.

Drilling the hole through the three layers of
high density MDF and finishing with a chisel.



Dismantling the filter and checking the two
chemicals. They are good but I will replace
them with HDG on occasion.



Copper side filter.



Replacement of the cables going to the terminal block. HP wires are large enough not to require changing.



Putting back the many layers of glass wool.



Black paint on the facades.



The rigidity of the facades is done using compressed polystyrene plates glued inside the grids. They are held in place by the metal strips which will then stick to the magnets.

Opposite removal of residues with a carbide pellet then scraping with a wire brush



Before and after the first stroke of gray spray paint. It will take two coats.



Production of plywood frames intended to replace compressed polystyrene.

To avoid any risk of vibrations it is necessary to insert a kind of felt between the grids and the boards. In this area the cheapest is the Ikea fleece blanket.



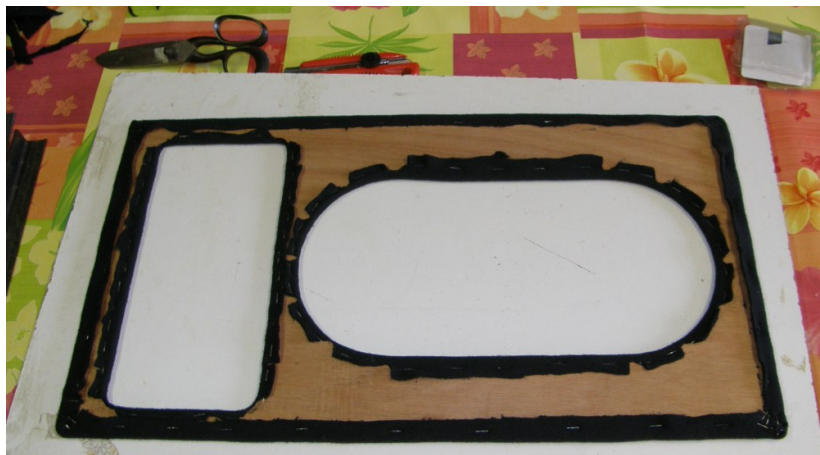
Cutting.



Take care to always distribute the tensions evenly before stapling.



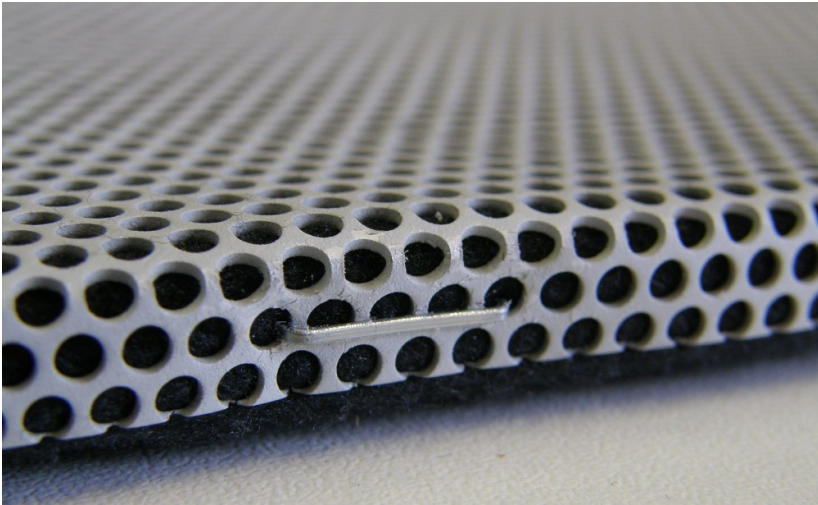
Cut, fold, stretch, staple...



Finishes completed.



All that remains is to insert them into the grids.



Fastening of the grids by stapling on the edge.



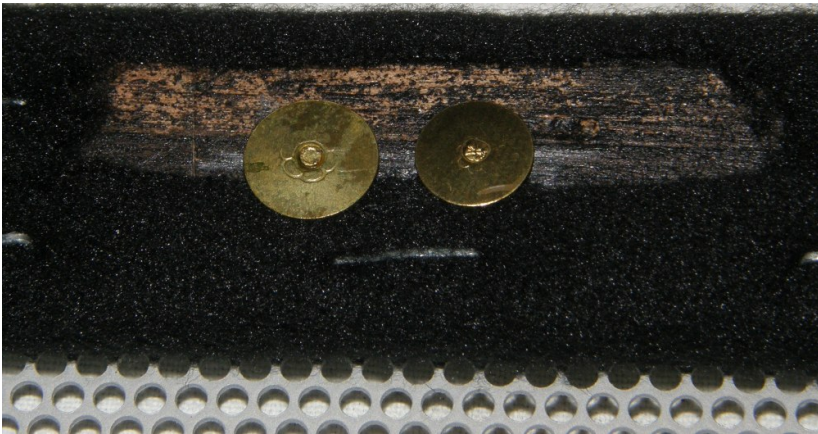
Interior.



They have regained their former look.



The caches attached to the magnets of the crates using their now non-existent metal parts. Small iron plates cut out of a can will replace them...but big problem to stick them on the wood, the glues and other glues I have don't succeed!



Finally I give up the sheets in favor of an archi-simple solution: to plant thumbtacks :-)



Very good speakers with undeniable qualities, unfortunately very difficult to find.

Sound qualities to match their elegance

LINKS

[Response Curve](#)

[Features: #1 #2](#)

Average price recorded in 2015: €200

729853

July 2011